

FOR CONTINUATION, SEE WSP DRAWING 70001979-102

ROUTE DEVIATION TO ACCOMMODATE EXISTING SERVICES

A449 STAFFORD ROAD

8m

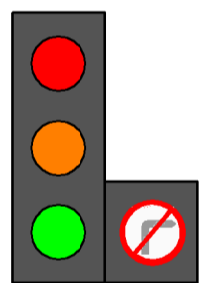
1m

FOOTWAY / CYCLEWAY AND VERGE TO TIE BACK INTO EXISTING

STATION DRIVE

TURNING PROVISION FOR HGV's

NO RIGHT TURN ON PRIMARY AND SECONDARY SIGNAL HEADS



CLOSURE OF EXISTING RIGHT TURN LANE

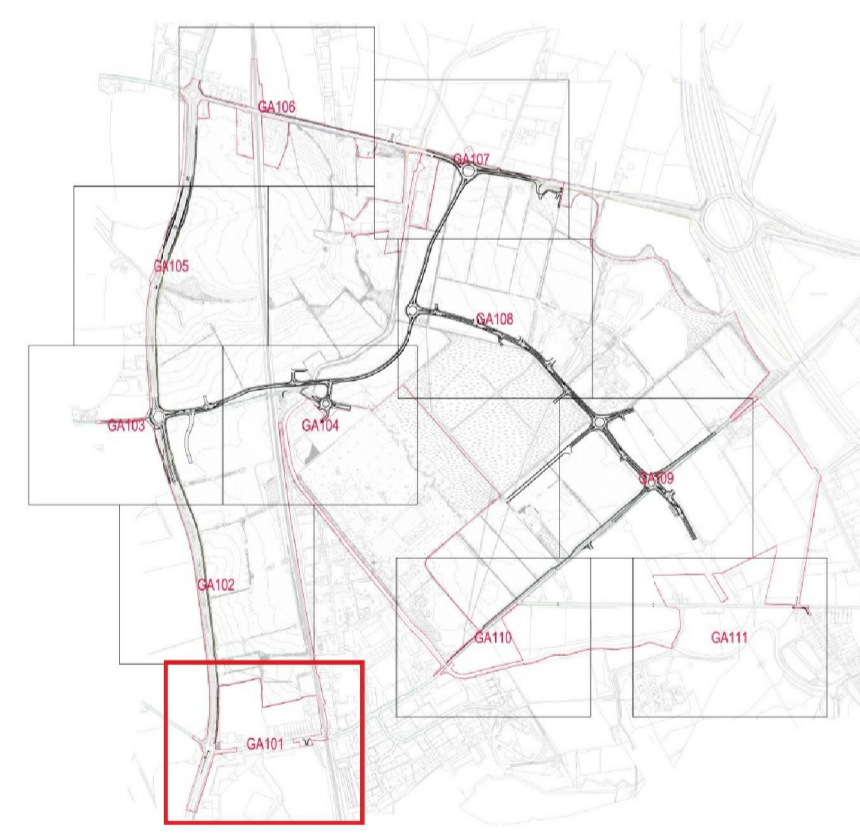
A449 STAFFORD ROAD

RAILWAY LINE

RAILWAY LINE

- KEY**
- ORDER LIMITS
 - STAFFORDSHIRE COUNTY COUNCIL RECORDED HIGHWAY BOUNDARY
 - ASSUMED HIGHWAYS ENGLAND HIGHWAY BOUNDARY
 - ROAD
 - FOOTWAY / CYCLEWAY
 - VERGE / GRASS

NOTE: LIMITS OF DEVIATION SHOWN ON THE WORKS PLANS (DOCUMENT SERIES 2.2)



DRAFT

 West Midlands Interchange	
Project THE WEST MIDLANDS RAIL FREIGHT INTERCHANGE ORDER 201X	
Drawing Status CONSULTATION DRAFT	
Drawing Title Drawing Size A1 GENERAL ARRANGEMENT PLAN 101	
Regulation	Document
5 (2) (o)	2.9
Drawn NW	Date JUNE 2017
Scale 1:1000	Reviewed JF
Drawing No. WSP-70001979-GA-101	Rev. A