

FOR CONTINUATION, SEE WSP DRAWING 70001979-GA-103

- KEY**
- ORDER LIMITS
 - ASSUMED HIGHWAYS ENGLAND HIGHWAY BOUNDARY
 - FOOTWAY / CYCLEWAY
 - VERGE / GRASS
- NOTE: LIMITS OF DEVIATION SHOWN ON THE WORKS PLANS (DOCUMENT SERIES 2.2)

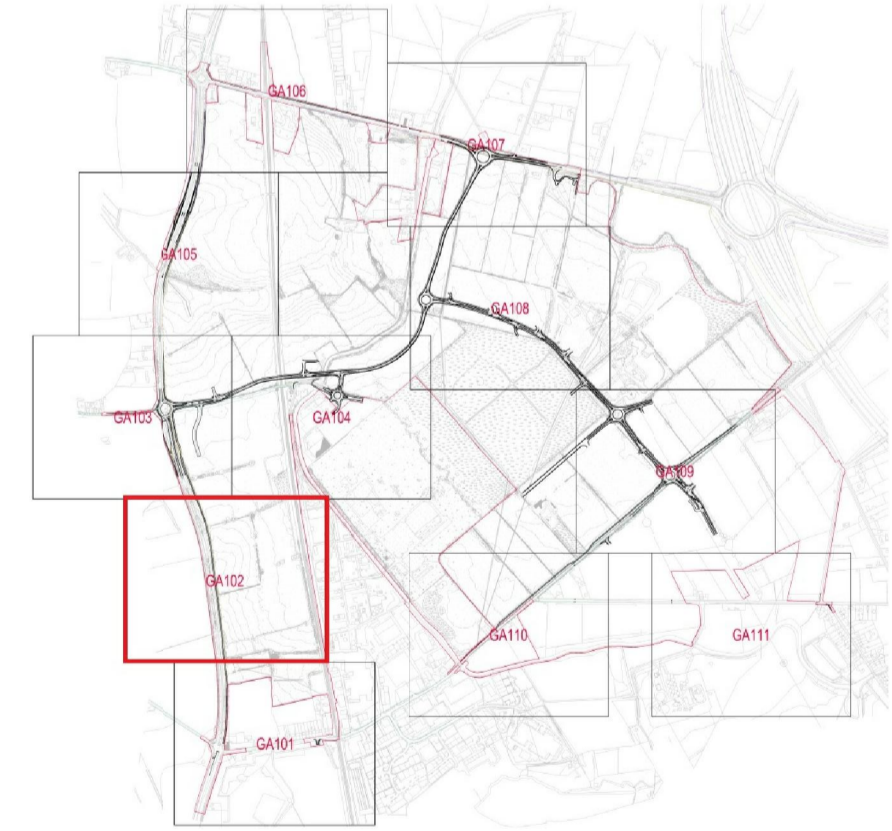
AA49 STAFFORD ROAD

RAILWAY LINE

RAILWAY LINE

FOR CONTINUATION, SEE WSP DRAWING 70001979-GA-101

DRAFT



 West Midlands Interchange	
Project THE WEST MIDLANDS RAIL FREIGHT INTERCHANGE ORDER 201X	
Drawing Status CONSULTATION DRAFT	
Drawing Title GENERAL ARRANGEMENT PLAN 102	
Drawing Size A1	
Regulation 5 (2) (o)	Document 2.9
Drawn NW	Date JUNE 2017
Scale 1:1000	Reviewed JF
Drawing No. WSP-70001979-GA-102	Rev. A