

FOR CONTINUATION, SEE DOCUMENT 2.9B

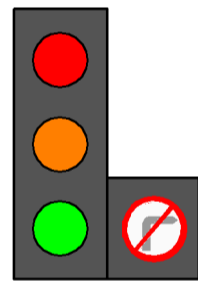
ROUTE DEVIATION TO ACCOMMODATE EXISTING SERVICES

FOOTWAY / CYCLEWAY AND VERGE TO TIE BACK INTO EXISTING

STATION DRIVE

TURNING PROVISION FOR HGVs

NO RIGHT TURN ON PRIMARY AND SECONDARY SIGNAL HEADS



CLOSURE OF EXISTING RIGHT TURN LANE





A449 STAFFORD ROAD

A449 STAFFORD ROAD

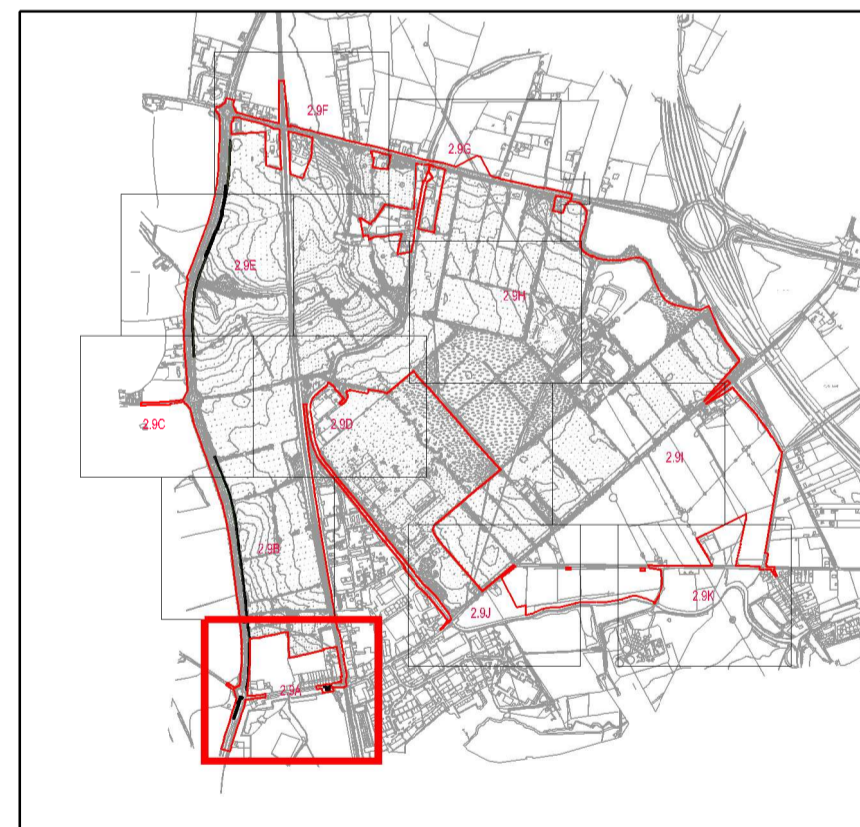
RAILWAY LINE

RAILWAY LINE

KEY

-  ORDER LIMITS
-  ROAD AND HGV TURNING AREA
-  FOOTWAY / CYCLEWAY
-  VERGE / GRASS

NOTE: LIMITS OF DEVIATION SHOWN ON THE WORKS PLANS (DOCUMENT SERIES 2.2) AND SET OUT IN ARTICLE 4 OF THE DEVELOPMENT CONSENT ORDER.



- E - 05/06/2018 - RED LINE UPDATED
- D - 08/05/2018 - MINOR AMENDMENTS
- C - 20/03/2018 - MINOR AMENDMENTS
- B - 02/03/2018 - RED LINE UPDATED
- A - FIRST ISSUE



Project
THE WEST MIDLANDS RAIL FREIGHT
INTERCHANGE ORDER 201X

Drawing Status
SUBMISSION

Drawing Title Drawing Size A1
GENERAL ARRANGEMENT PLAN
101

Regulation Document
5 (2) (o) 2.9A

Drawn NW Date JUNE 2018 Scale 1:1000 Reviewed JF

Drawing No. Rev.
WSP-70001979-GA-101 E