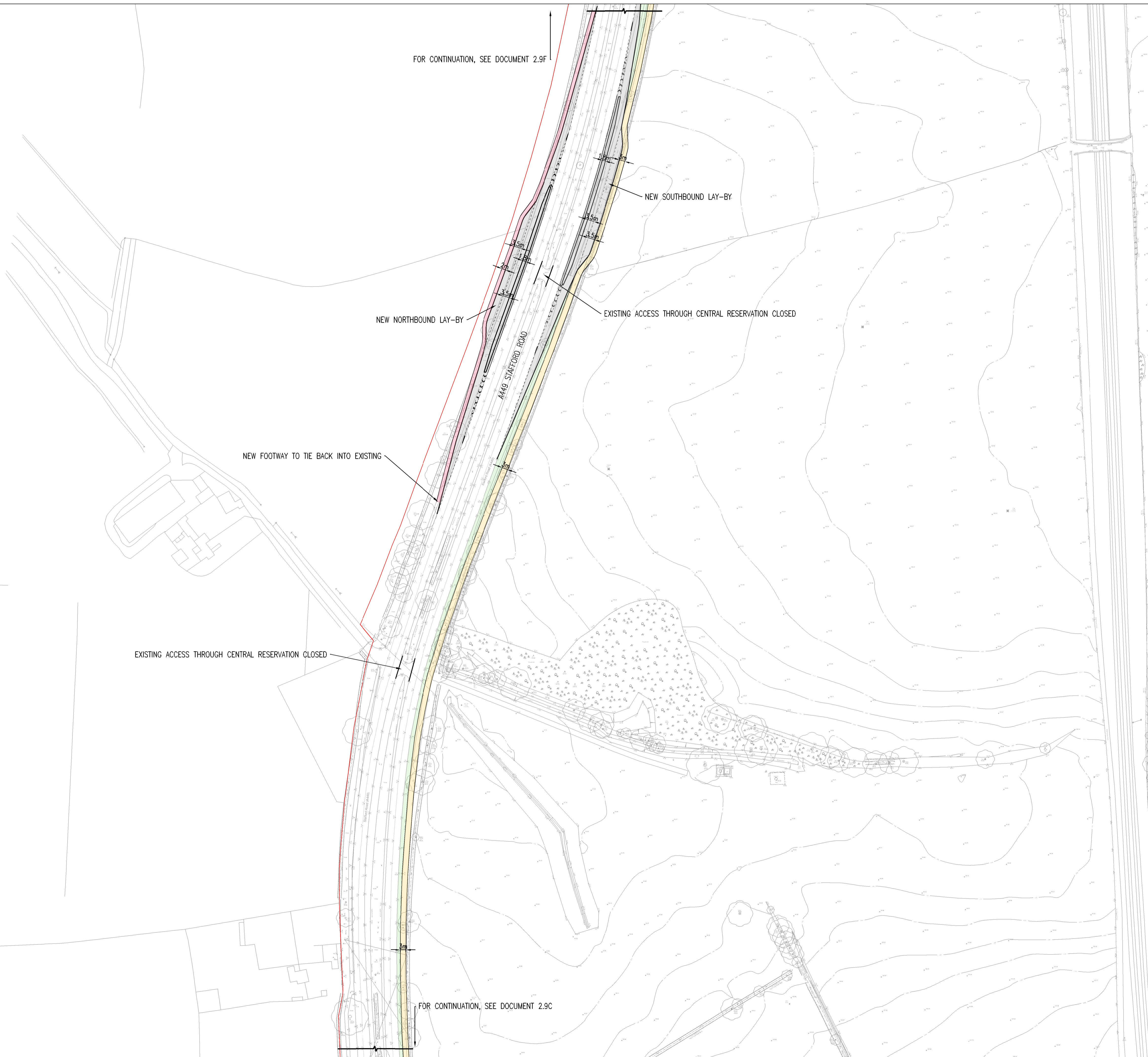


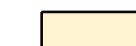
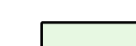
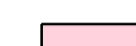


FOR CONTINUATION, SEE DOCUMENT 2.9F



- KEY
-  ORDER LIMITS
 -  HIGHWAY
 -  FOOTWAY / CYCLEWAY
 -  VERGE / GRASS
 -  FOOTWAY

NOTE: LIMITS OF DEVIATION SHOWN ON THE WORKS PLANS (DOCUMENT SERIES 2.2) AND SET OUT IN ARTICLE 4 OF THE DEVELOPMENT CONSENT ORDER.

NEW FOOTWAY TO TIE BACK INTO EXISTING

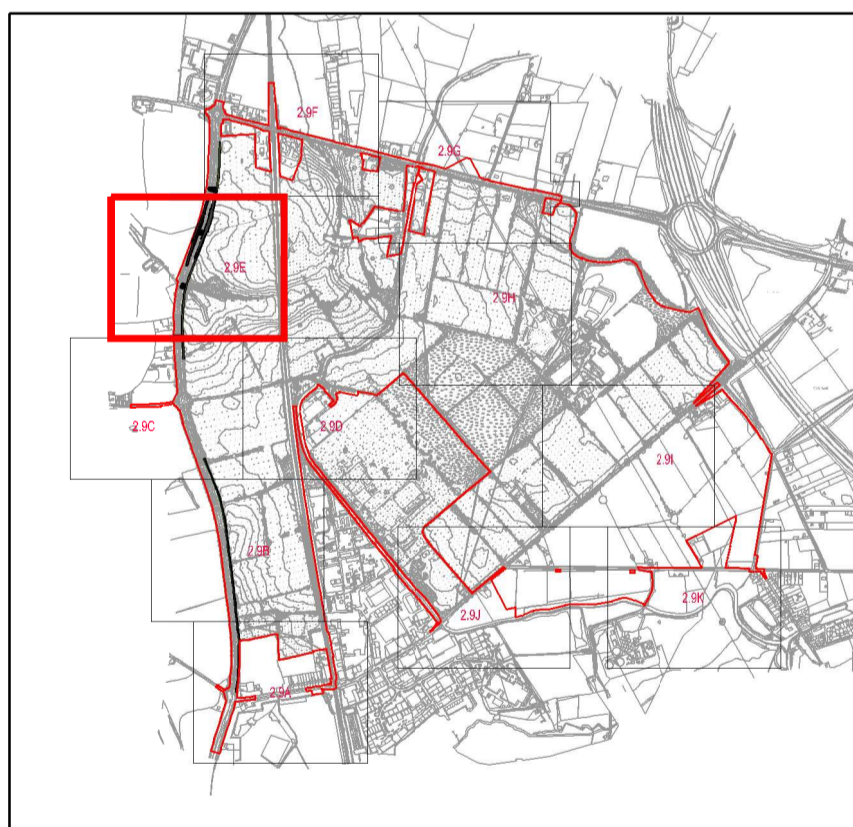
NEW NORTHBOUND LAY-BY

NEW SOUTHBOUND LAY-BY

EXISTING ACCESS THROUGH CENTRAL RESERVATION CLOSED

EXISTING ACCESS THROUGH CENTRAL RESERVATION CLOSED

FOR CONTINUATION, SEE DOCUMENT 2.9C



- E - 05/06/2018 - RED LINE UPDATED
- D - 08/05/2018 - MINOR AMENDMENTS
- C - 20/03/2018 - MINOR AMENDMENTS
- B - 02/03/2018 - RED LINE UPDATED
- A - FIRST ISSUE

	
Project THE WEST MIDLANDS RAIL FREIGHT INTERCHANGE ORDER 201X	
Drawing Status SUBMISSION	
Drawing Title Drawing Size A1 GENERAL ARRANGEMENT PLAN 105	
Regulation 5 (2) (c)	Document 2.9E
Drawn NW Date: JUNE 2018 Scale: 1:1000 Reviewed JF	Rev. E
Drawing No. WSP-70001979-GA-105	