



WEST
MIDLANDS
INTERCHANGE

M6/JCT.12

Community Liaison Group

1 October 2025

ox|ford
AN OMERS COMPANY

 **LOGISTICS
CAPITAL PARTNERS**



Construction
update



Planning
update



Social value
update



Community
parks updates



Communications
and engagement
update



Construction update

Main construction update

CURRENT AND UPCOMING WORKS (September 2025)

Highways:

- Vicarage Road temporary Road (1)
- Vicarage Road roundabout and partial Spine Road (2)
- 30 series access road (3)
- 50 series Access Road (4)
- A5 Roundabout construction (5)

20 Series:

- Outfall E Headwall installation (6)

40 Series:

- Continuation and remediation works to remaining areas in 4020/4030 (7)

50 Series:

- 5030 – Catchment D drainage installation and Outfall Headwall installation to Canal (8)

Vertical Build:

- Plot 5030 (9)

In hand over:

- Plot 3030 (earthworks)
- Plot 3020 (earthworks)
- Plot 3010 (earthworks as far as possible due to 11kv overheads)
- Plot 4040 (earthworks)

Key:

Under
Construction



In handover
phase



Vicarage Road update



CURRENT AND UPCOMING WORKS (September 2025)

Highway Works:

- Vicarage Road temporary public diversion currently under construction and operational at end of October 2025
- Temp road will allow 2-way traffic running to keep access exactly as it is now (shown in green with yellow arrows)
- Temp road will have a crossroads with Give Way junctions centrally to allow works traffic access and egress from the Temp road to allow for construction of the new Vicarage Road roundabout and access to build plots
- There will be 4-way traffic lights to accommodate a pedestrian crossing just east of the crossroads to allow workforce to cross safely between work zones
- Vicarage road will be stopped up between diversion tie in points (shown in Grey) with site clearance and construction works starting immediately after temp diversion is opened.
- Programmed durations are around 9 months to complete and re open Vicarage Road on its original alignment complete with a new roundabout to allow access to the WMI development
- Temporary road will then be removed from plots

Vicarage Road update

COMPLETED WORKS (Q3 2026)



A5 Roundabout update



UPCOMING WORKS (Q4 2025 – Q2 2026)

- 2 Way Traffic running under narrow lanes with 30 mph speed limit with traffic pushed slightly north to allow working room on southern side
- Footpath on northern side will potentially be closed. Under negotiation with NH
- Construction works to divert Calf Heath canal feeder channel around the footprint of the new roundabout
- Install new culvert beneath footprint of Link road arm
- Initial topsoil strip and earthworks to roundabout including merge and diverge
- Carry out multiple stats diversions to accommodate new roundabout footprint
- Earthworks carried out to attain correct levels for new roundabout
- Installation of new drainage



5030 Carlsberg Update



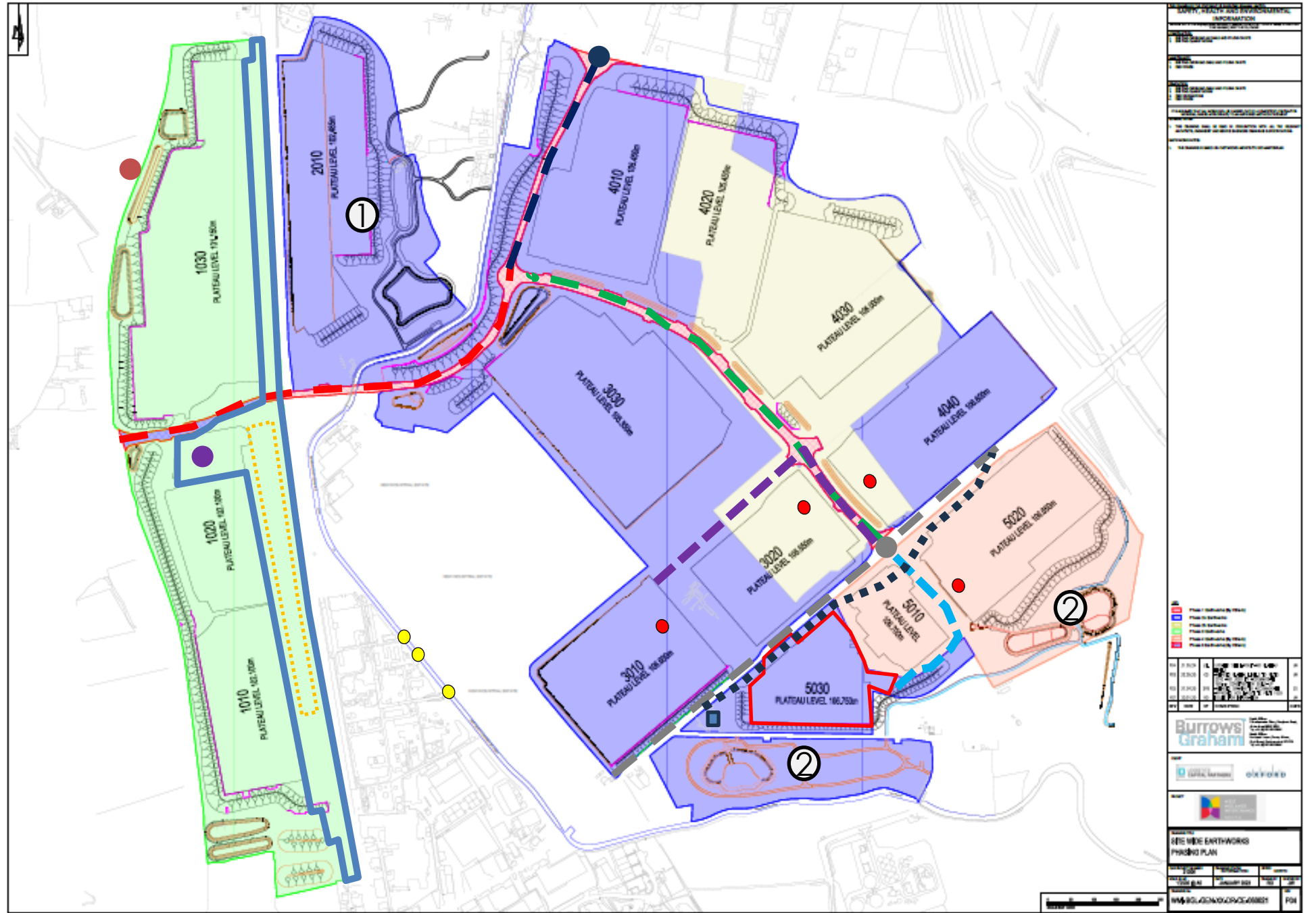
- Started On Site: 4th August 2025
- PC 4th May 2026
- Earthworks Complete
- Piling Started 15th September, Two Weeks Remaining
- Groundworks Started 15th September – Ongoing
- Foundations Start W/C 6th October
- Steel Start Early November
- Cladding Start Late November
- External Yard to Re-commence W/C 6th Oct





Planning update

- Plot 5030 (consented)
- Croft Lane CP (submitted)
- Calf Heath CP (submitted)
- HV Substation (submitted)
- Canal Bridge removals (submitted)
- Rail Terminal Lighting (submitted)
- Plot Signage (submitted)





Social value

Social Value – Delivered activity

Updates over the last quarter:

Training and
Upskilling

T Level
students

curriculum
activities

community
activities

- T Level Design, Surveying and Planning student completed their industry placement – started an apprenticeship.
- Hosted 4 work experience students across the summer.
- Codsall Community High School Employability Day – Winvic and SJC - students providing ideas into the design of the Corten Steel Fencing.
- Teacher Encounter session hosted onsite – Science and Geography teachers attended.
- Participated in 'Inspiring Tomorrow's Workforce' careers video and CECA Midlands video.

Social Value – Delivered and planned activity

- Hosted environmental activities in August during the summer holidays at Perton Library, talking to children about habitats and biodiversity.
- Local artist engaged to design protection screening to the underside of the new canal overbridge. – incorporating feedback from Codsall Community High School.
- Collaborating with Havergal Primary School providing educational support for their students.
- Liaising with FindItIn Stoke and Staffs regarding a Meet The Buyer event in the Autumn.

Planned activity:

- Engagement with Thomas Telford UTC and NSCG (T Levels).
- SUA work experience October half term.
- SUA Apprenticeship event
- Wolgarston High School – mock interviews.
- University of Wolverhampton – Civil Engineering site visits





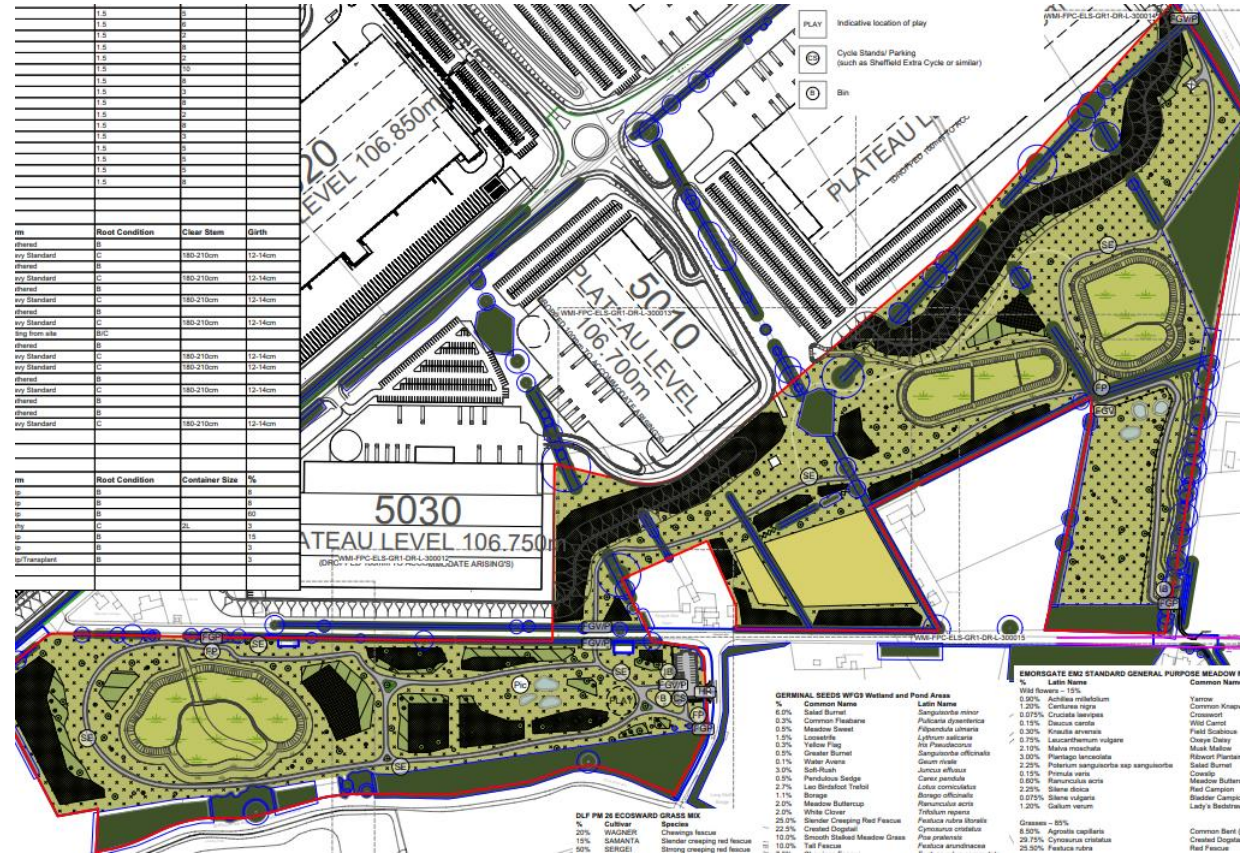
Community Parks and Landscaping Update

Community Park updates

Park proposals have been submitted to the Council for planning approval.

Planting designs complete, including Black Poplar.

Soft and hard landscaping progressing well.

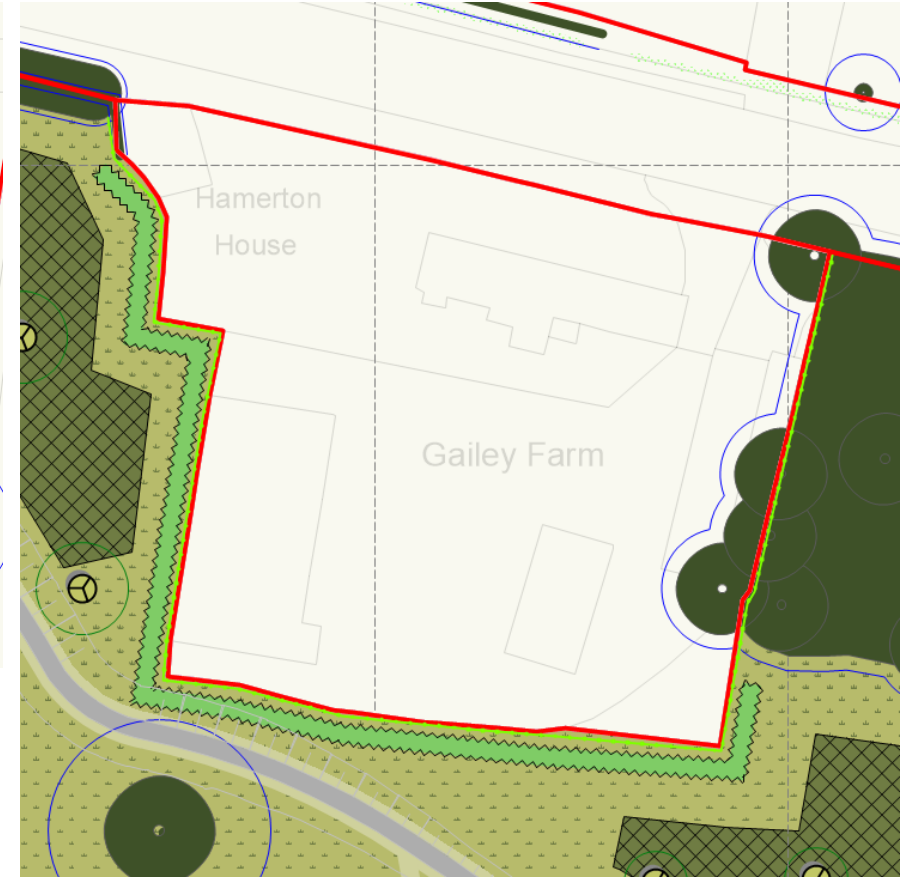
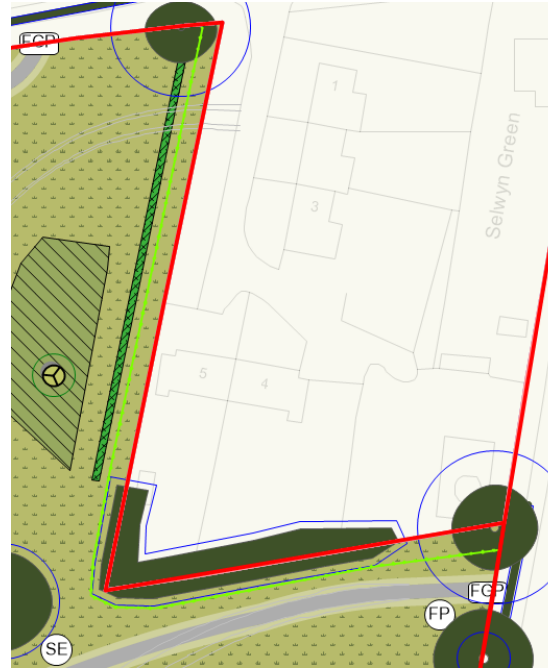
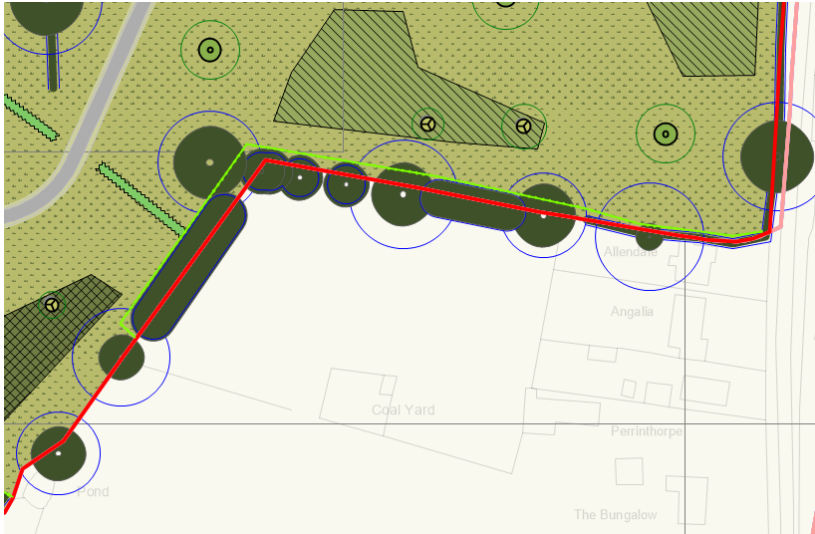


Community Parks



Community Park updates

Enhanced boundaries around those properties which back onto the Croft Lane Community Park.





Communications and engagement update

Communications & Engagement

Stay updated:

Subscribe to the newsletter and receive traffic updates by visiting:

<https://www.westmidlandsinterchange.co.uk/contact/>

Follow us on [Facebook](#) for project updates and news stories:



West Midlands Interchange - WMI



Email: contactus@communityrelations.co.uk

Tel: 0800 377 345

Thank you and any questions