

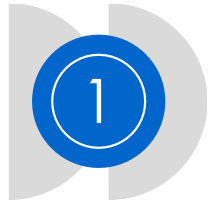


WEST
MIDLANDS
INTERCHANGE

M6/JCT.12

Community Liaison Group

10 June 2025



Construction
update



Highways
update



Planning update



Social value
and
Community
Benefit Fund
update



Community
parks updates



Communications
and engagement
update



Construction update

Main Construction Update

CURRENT WORKS

50 Series:

- Continuation and completion of Earthworks & Drainage
- Continuation of Earthworks retaining walls & Screening bunds
- Hard landscaping & Drainage to Calf Heath Community Park
- Installation of permanent access roads
- Utility diversions

40 Series:

- Plot Earthworks and material stabilization
- Quarry Infill with stabilised material

30 Series:

- Completion of plot 3010 as far as possible prior to 11kv cables being diverted underground

20 Series:

- Pipe Jacking beneath Canal
- Rail Surveys

Internal Link and Spine road:

- Strip and construct earthworks to internal service roads in the 30 & 50 series

Highways

- A449 Layby works – Drainage, Earthworks, Kerbing and Surfacing



Future Construction Update

FUTURE WORKS – Q2/3 2025 planned start

50 series:

- Straight Mile Drainage Crossing
- Construction of Temporary Vicarage Road
- Completion of Internal service road
- Commence Vertical Build works

40 series:

- Commence highway construction of internal service road
- A5 Roundabout Commencement

30 Series:

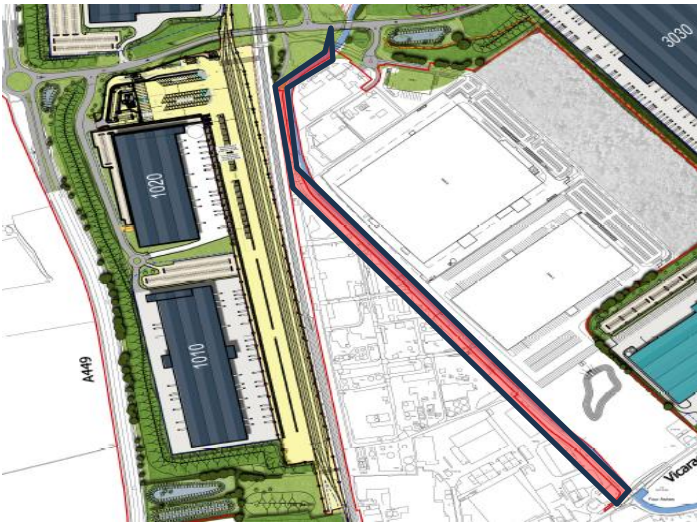
- Commence highway construction of internal service road

Highways / Rail / Other:

- Power diversions and new stats installations
- Rail Surveys
- Vicarage Roundabout commencement

Staffordshire and Worcestershire Canal:

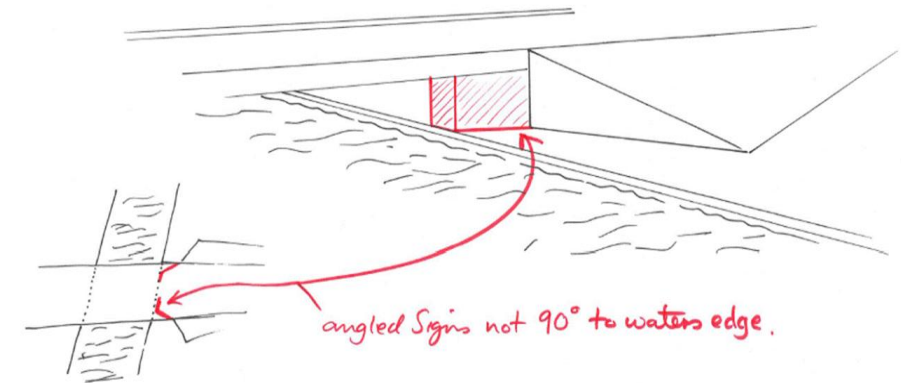
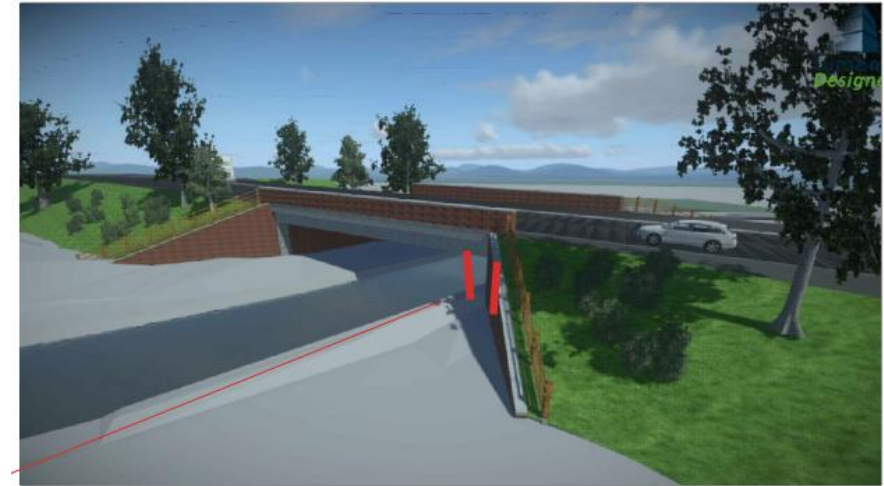
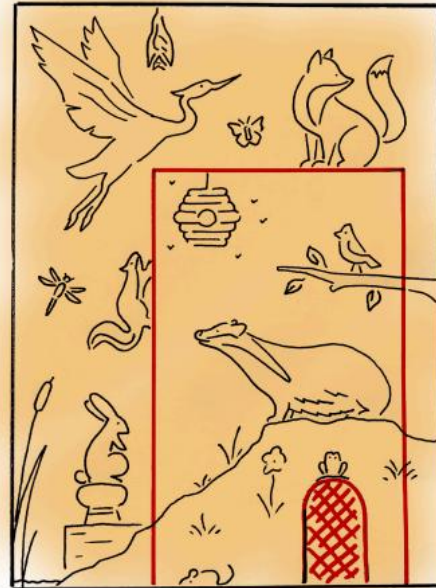
- Removal of piped bridges and access bridge from SI group to GSF
- Resurfacing and construction of new towpath



Worcestershire Canal bridge design – Community feedback

As part of the development, we plan to construct a bridge over the Worcestershire Canal. To deter vandalism, we're planning to install Corten steel fencing on either side of the bridge.

Fence design options:



Please provide feedback to
contactus@communityrelations.co.uk



Highways update

TRAFFIC MANAGEMENT

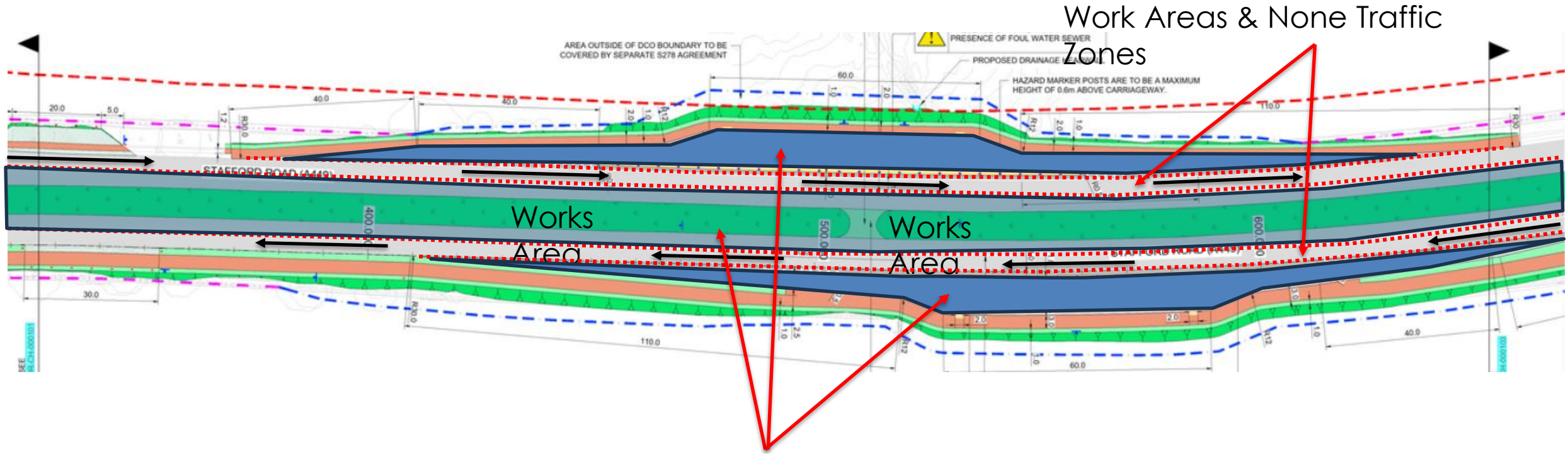
Upcoming Traffic Management Switches:

- Current Lane 2 to Lane 1 running – Facilitate the Central Res works – End June/Start July
- Back to Lane 1 running – Completion of verges post utility works – End July
- Remove TM – Mid August

A449 Roadworks Update

CURRENT WORKS SEQUENCE OVER THE COMING PERIOD

- Divert BT Openreach – Q1 - Q3 2025
- Southbound Completion –
Kerbing, signs, seeding – Q2 – Q3 2025
- Northbound Completion –
Drainage, earthworks, signs, seeding – Q2 – Q3 2025
- Resurfacing and white lining works to laybys and Tie ins – Q2 – Q3 2025
- Remove central reservation gaps along A449 – Q3 2025



Work Areas & None Traffic Zones



Planning update

Planning Overview

Earthworks (Consented)

- Phase 2A
- Phase 2B
- Phase 3
- Phase 4
- Link Road (East)
- Spine Road

Rail (Consented)

- RFT and Tracks
- Rail Office

Highways (Consented)

- A449 Laybys

Highways (Submitted)

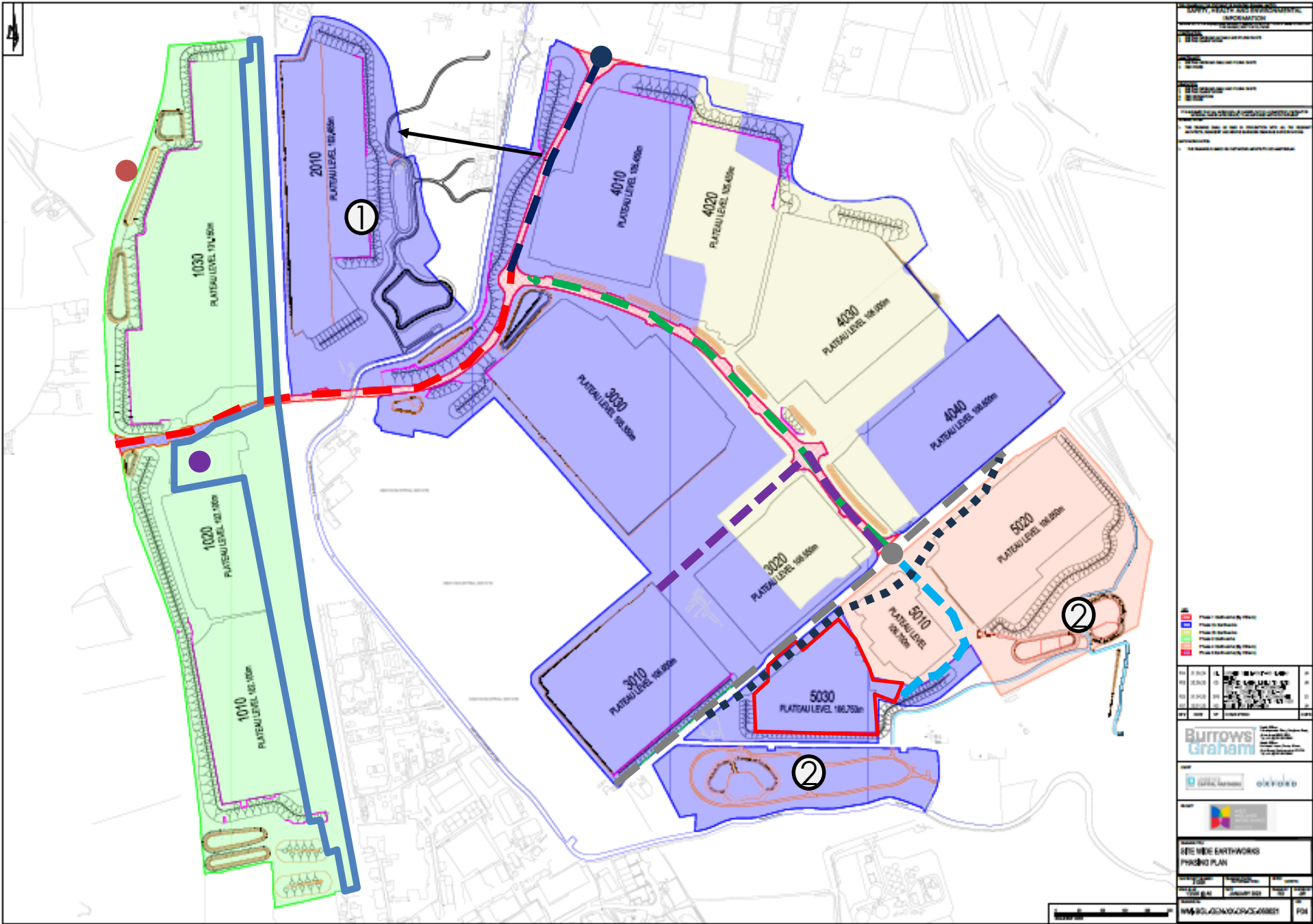
- Link Road (West)
- Vicarage Road
- Temporary Road
- 50 Series Access

Highways (Preparing)

- 30 Series Access + Spine Road (South)
- Link Road (East) + A5 Roundabout

Other

- Croft Lane CP
- Calf Heath CP
- Plot 5030





Social value update

Social Value – Delivered activity

Updates over the last quarter:

Training and
Upskilling

T Level
students

curriculum
activities

community
activities

- T Level Design, Surveying and Planning student onsite.
- Hosted Quantity Surveying Work Experience.
- Supported mock interviews at Staffordshire University Academy.
- Roller driver training.
- Easter campaign on site, donating Easter Eggs to Penkridge Parish Council.
- World Book Day – donated 'When I Grow Up' books to local libraries and Family Hubs.
- Tunnel Boring Machine (TBM) naming.

Social Value – Delivered and planned activity

- Hosted environmental activities in May half term at Perton Library, talking to children about habitats and biodiversity.
- Participated in 'Inspiring Tomorrow's Workforce' careers video and CECA Midlands video.
- Ongoing calendar of educational events, also liaising with the Careers and Enterprise Company.
- Local artist engaged to design protection screening to the underside of the new canal overbridge.



Planned activity:

- 4 work experience students being hosted on site in June/July.
- Year 12 mock interviews at Cannock Chase High School – Summer term.
- Codsall Community High School Employability Day 9th July.
- Teacher Encounter session scheduled for 10th July.



Community Parks and Landscaping Update

Community Park updates

Community Engagement

Meeting held with Croft Lane residents to discuss design.

Reserved matters applications being drawn up for both parks.

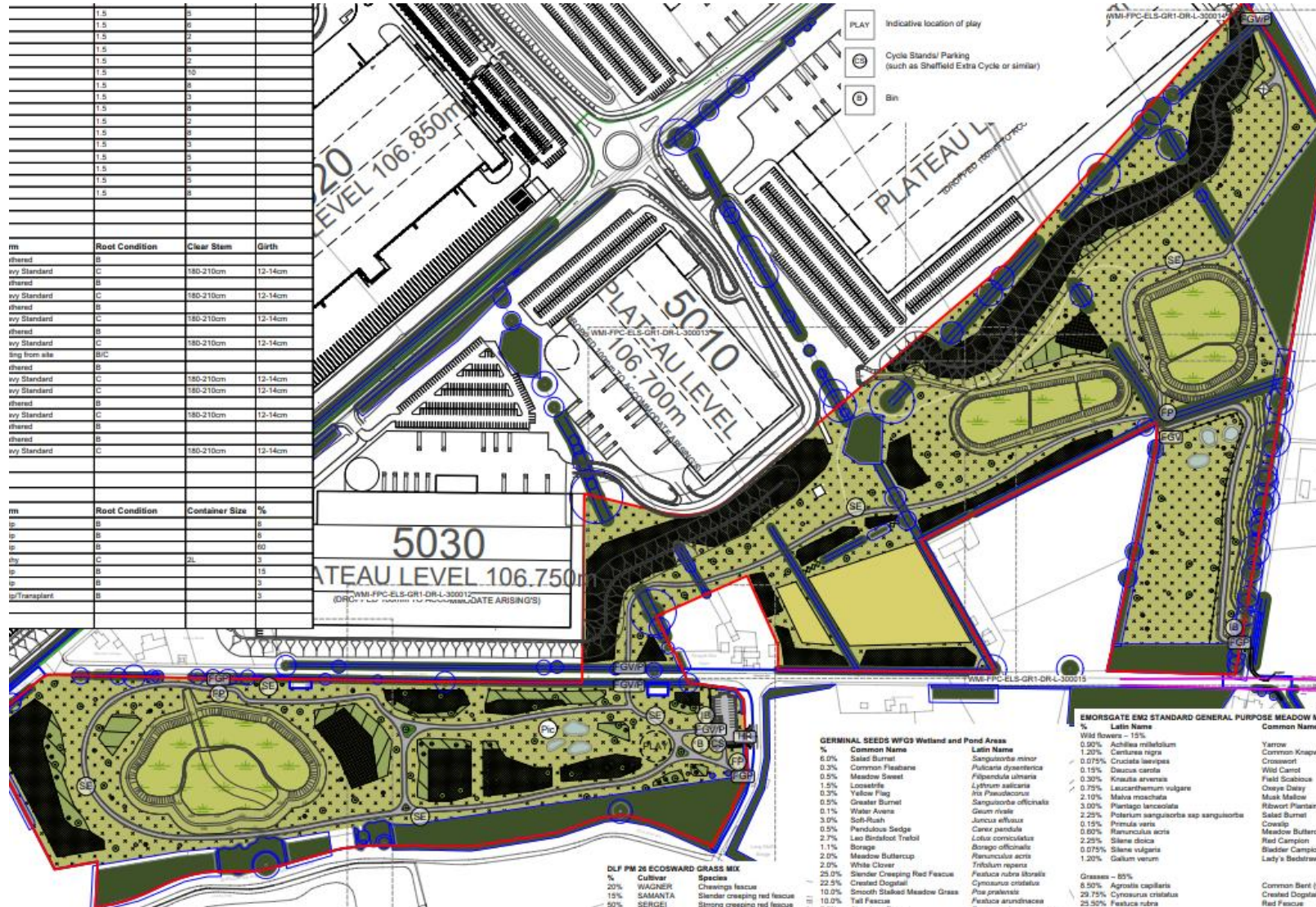
Planting designs complete, including Black Poplar.

Soft and hard landscaping

Progressing well.

Sculptural and play features

Provided by Wildwood UK



Community Parks updates

Community Engagement

Meeting held with Croft Lane residents to discuss design.

Reserved matters applications being drawn up for both parks.

Planting designs complete, including Black Poplar.

Soft and hard landscaping

Progressing well.

Sculptural and play features

Provided by Wildwood UK.



Croft Lane community park





Communications and engagement update

Communications & Engagement

6



Stay updated:

Subscribe to the newsletter and receive traffic updates by visiting:
<https://www.westmidlandsinterchange.co.uk/contact/>

Follow us on [Facebook](#) for project updates and news stories:

West Midlands Interchange

Spring Newsletter 2025



Welcome to our Spring newsletter

In the latest West Midlands Interchange project newsletter, find out how the project is progressing, information on upcoming work, updates from February's Community Liaison Group, as well as how the project celebrated National Careers Week in March.

What's next for the two A449 laybys



West Midlands Interchange - WMI



Email: contactus@communityrelations.co.uk

Tel: 0800 377 345

Thank you and any questions